

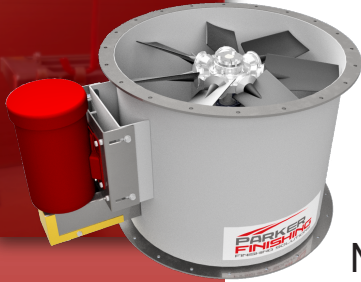
# 12" Tube Axial Fan: \$1,199.00 + Shipping

Part Number:



parkerfinishing.com

## FAN SPECIFICATIONS



Diameter: 12"

Height: 20"

Housing: 16 GA Steel

Motor Mount: 10 GA Steel

Drive: Dual V-Belt

CFM: 1300 CFM @ 0.25" Static Pressure

Motor: TEFC Motor - 1 HP - Mounted Outsided  
Air Stream

Voltage Options:

A: Single Phase: 115 - 208 - 230V

B: Three Phase: 208V / 230V / 460V

Amperage: Single Phase 8.65 - 17.3A / 3 Phase 2.78 - 5.56A

Fan: WingFan 6 Blade Fan with Aluminum Hub

Bearings: Dual Pillow Block Bearings - Greaseable

Made In USA

## WARRANTY

### Warranty

Our finishing exhaust walls, paint and powder booths, and mixing rooms are designed with heavy-duty 18 Ga G90 galvanized steel panels. Customer built with simple nut and bolt assembly. Our patent pending "Z" Grid Quick Release Filter Panels make assembly, maintenance, and cleaning quick, easy, and safe. Our products are designed and fabricated to adhere to national and industry standards, including NFPA and OSHA, for optimum safety. Our products are backed by a 1-year warranty against manufacturing defects. In the event your products require service, we stock all replacement parts and even offer onsite service to get you back up and running quickly.

### Fan Warranty

Our fans are fabricated in-house with a 16 ga steel body housing, non-sparking poly propylene blades, Dual Greaseable Pillow Block Bearings, 10 Ga Steel Motor Mount and Dual V Belt Drive. Our products are backed by a 1-year warranty against manufacturing defects. In the event your products require service, we stock all replacement parts and even offer onsite service to get you back up and running quickly.

### Motor Warranty

All our fans come with a WEG motor. Please see the WEG warranty policy on our website and the link to the WEG warranty claims page. <https://www.weg.net/catalog/weg/US/en/return-process/service-warranty-claim>.



This Unit Meets or Exceeds:  
NFPA 33 Standards  
OSHA 1910 Standards

