

14' x 10' x 10' Open Face Booth: \$9,300.00 + Shipping

Part Number: 08484A00



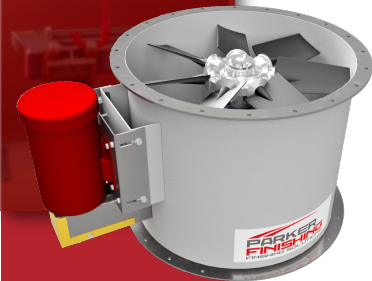
parkerfinishing.com

BOOTH SPECIFICATIONS



Inside Width: 14' - 0'
Inside Height: 10' - 0'
Inside Depth: 10' - 0'
Overall Height: 10' 2"
Exhaust Location: Top
Panel Material: 18 GA G90 Galvanized Steel

FAN SPECIFICATIONS



Diameter: 24"
Height: 20"
Motor Mount: 10 GA Steel
Drive: Dual V-Belt
CFM: 7800 CFM @ 0.25" Static Pressure
Motor: TEFC Motor - 2 HP - Mounted Outside Airstream
Voltage Options, A: Single Phase: 115 - 208 - 230V
B: Three Phase: 208V / 230V / 460V
Amperage: Single Phase 18.65 - 17.3A / 3 Phase 2.78- 6.15A
Fan: WingFan 7 Blade Fan with Aluminum Hub
Bearings: Dual Pillow Block Bearings - Greaseable

ALSO INCLUDED

Manometer - Dwyer Mark II
Roll Weather Stripping
24" Tube Axial Fan with TEFC Motor

- 2 HP Single Phase or 2 HP 3 Phase

Galvanized Sheet Metal Panels
Flame Guard
Explosion Proof Lighting
Fasteners
Drawings/ Assembly Instructions
Filter Media
Patented "Z" Grid Quick Release Filter Panel System

Made In USA

WARRANTY

Warranty

Our finishing exhaust walls, paint and powder booths, and mixing rooms are designed with heavy-duty 18 Ga G90 galvanized steel panels. Customer built with simple nut and bolt assembly. Our patent pending "Z" Grid Quick Release Filter Panels make assembly, maintenance, and cleaning quick, easy, and safe. Our products are designed and fabricated to adhere to national and industry standards, including NFPA and OSHA, for optimum safety. Our products are backed by a 1-year warranty against manufacturing defects. In the event your products require service, we stock all replacement parts and even offer onsite service to get you back up and running quickly.

Fan Warranty

Our fans are fabricated in-house with a 16 ga steel body housing, non-sparking poly propylene blades, Dual Greaseable Pillow Block Bearings, 10 Ga Steel Motor Mount and Dual V Belt Drive. Our products are backed by a 1-year warranty against manufacturing defects. In the event your products require service, we stock all replacement parts and even offer onsite service to get you back up and running quickly.

Motor Warranty

All our fans come with a WEG motor. Please see the WEG warranty policy on our website and the link to the WEG warranty claims page. <https://www.weg.net/catalog/weg/US/en/return-process/servicewarranty-claim>.



This Unit Meets or Exceeds:
NFPA 33 Standards
OSHA 1910 Standards

