

7' x 7' x 3' 6" Open Face Booth: \$4,299.00 + Shipping

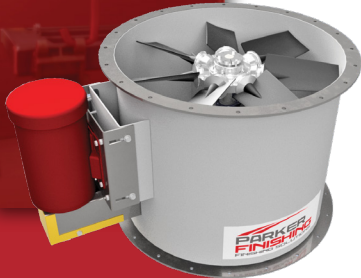
Part Number: 08452A00

BOOTH SPECIFICATIONS



Inside Width:	7' - 0'
Inside Height:	7' - 0'
Inside Depth:	3' - 6"
Overall Height:	8' 9"
Exhaust Location:	Top
Panel Material:	18 GA G90 Galvanized Steel

FAN SPECIFICATIONS



Diameter:	24"
Height:	20"
Motor Mount:	10 GA Steel
Drive:	Dual V-Belt
CFM:	7800 CFM @ 0.25" Static Pressure
Motor:	TEFC Motor - 2 HP - Mounted Outside Airstream
Voltage Options, A:	Single Phase: 115 - 208 - 230V
B:	Three Phase: 208V / 230V / 460V
Amperage:	Single Phase 18.65 - 17.3A / 3 Phase 2.78- 6.15A
Fan:	WingFan 7 Blade Fan with Aluminum Hub
Bearings:	Dual Pillow Block Bearings - Greaseable

ALSO INCLUDED

- Manometer - Dwyer Mark II
- Roll Weather Stripping
- 24" Tube Axial Fan with TEFC Motor
 - 2 HP Single Phase or 2 HP 3 Phase
- Galvanized Sheet Metal Panels
- Flame Guard
- Fasteners
- Drawings/ Assembly Instructions
- Filter Media
- Patented "Z" Grid Quick Release Filter Panel System

Made In USA

WARRANTY

Warranty

Our finishing exhaust walls, paint and powder booths, and mixing rooms are designed with heavy-duty 18 Ga G90 galvanized steel panels. Customer built with simple nut and bolt assembly. Our patent pending "Z" Grid Quick Release Filter Panels make assembly, maintenance, and cleaning quick, easy, and safe. Our products are designed and fabricated to adhere to national and industry standards, including NFPA and OSHA, for optimum safety. Our products are backed by a 1-year warranty against manufacturing defects. In the event your products require service, we stock all replacement parts and even offer onsite service to get you back up and running quickly.

Fan Warranty

Our fans are fabricated in-house with a 16 ga steel body housing, non-sparking poly propylene blades, Dual Greaseable Pillow Block Bearings, 10 Ga Steel Motor Mount and Dual V Belt Drive. Our products are backed by a 1-year warranty against manufacturing defects. In the event your products require service, we stock all replacement parts and even offer onsite service to get you back up and running quickly.

Motor Warranty

All our fans come with a WEG motor. Please see the WEG warranty policy on our website and the link to the WEG warranty claims page. <https://www.weg.net/catalog/weg/US/en/return-process/servicewarranty-claim>.



This Unit Meets or Exceeds:
NFPA 33 Standards
OSHA 1910 Standards

