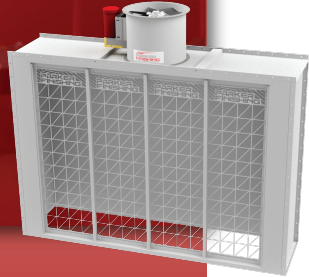


10' x 7' x 2'6" Exhaust Wall: \$2,995.00 + Shipping

Part Number: 08310A22

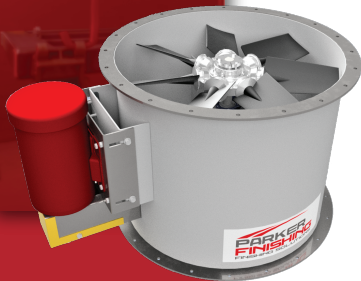
WALL SPECIFICATIONS



Width: 10' - 0'
Height: 7' - 0'
Depth: 2' - 6"
Overall Height: 8' 9"
Exhaust Location: Top*
Panel Material: 18 GA G90 Galvanized Steel

*Can be relocated via special order

FAN SPECIFICATIONS



Diameter: 24"
Height: 20"
Motor Mount: 10 GA Steel
Drive: Dual V-Belt
CFM: 7800 CFM @ 0.25" Static Pressure
Motor: TEFC Motor - 2 HP - Mounted Outside Airstream
Voltage Options, A: Single Phase: 115 - 208 - 230V
B: Three Phase: 208V / 230V / 460V
Amperage: Single Phase 18.65 - 17.3A / 3 Phase 2.78- 6.15A
Fan: WingFan 7 Blade Fan with Aluminum Hub
Bearings: Dual Pillow Block Bearings - Greaseable

ALSO INCLUDED

Manometer - Dwyer Mark II
Roll Weather Stripping
24" Tube Axial Fan with TEFC Motor

- 2 HP Single or 3 Phase

Galvanized Sheet Metal Panels
Fasteners
Drawings/ Assembly Instructions
Filter Media
Patented "Z" Grid Quick Release Filter Panel System

Made In USA

WARRANTY

Warranty

Our finishing exhaust walls, paint and powder booths, and mixing rooms are designed with heavy-duty 18 Ga G90 galvanized steel panels. Customer built with simple nut and bolt assembly. Our patent pending "Z" Grid Quick Release Filter Panels make assembly, maintenance, and cleaning quick, easy, and safe. Our products are designed and fabricated to adhere to national and industry standards, including NFPA and OSHA, for optimum safety. Our products are backed by a 1-year warranty against manufacturing defects. In the event your products require service, we stock all replacement parts and even offer onsite service to get you back up and running quickly.

Fan Warranty

Our fans are fabricated in-house with a 16 ga steel body housing, non-sparking poly propylene blades, Dual Greaseable Pillow Block Bearings, 10 Ga Steel Motor Mount and Dual V Belt Drive. Our products are backed by a 1-year warranty against manufacturing defects. In the event your products require service, we stock all replacement parts and even offer onsite service to get you back up and running quickly.

Motor Warranty

All our fans come with a WEG motor. Please see the WEG warranty policy on our website and the link to the WEG warranty claims page. <https://www.weg.net/catalog/weg/US/en/return-process/servicewarranty-claim>.



This Unit Meets or Exceeds:
NFPA 33 Standards
OSHA 1910 Standards



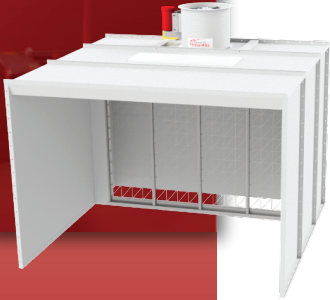
10' x 7' x 7' Open Face Booth: \$4,999.00 + Shipping

Part Number: 08310A00



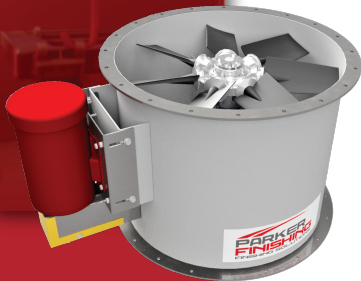
parkerfinishing.com

BOOTH SPECIFICATIONS



Inside Width: 10' - 0'
Inside Height: 7' - 0'
Inside Depth: 7' - 0'
Overall Height: 8' 9"
Exhaust Location: Top
Panel Material: 18 GA G90 Galvanized Steel

FAN SPECIFICATIONS



Diameter: 24"
Height: 20"
Motor Mount: 10 GA Steel
Drive: Dual V-Belt
CFM: 7800 CFM @ 0.25" Static Pressure
Motor: TEFC Motor - 2 HP - Mounted Outside Airstream
Voltage Options, A: Single Phase: 115 - 208 - 230V
B: Three Phase: 208V / 230V / 460V
Amperage: Single Phase 18.65 - 17.3A / 3 Phase 2.78- 6.15A
Fan: WingFan 7 Blade Fan with Aluminum Hub
Bearings: Dual Pillow Block Bearings - Greaseable

ALSO INCLUDED

Manometer - Dwyer Mark II
Roll Weather Stripping
24" Tube Axial Fan with TEFC Motor

- 2 HP Single Phase or 2 HP 3 Phase

Galvanized Sheet Metal Panels
Flame Guard
Explosion Proof Lighting
Fasteners
Drawings/ Assembly Instructions
Filter Media
Patented "Z" Grid Quick Release Filter Panel System

Made In USA

WARRANTY

Warranty

Our finishing exhaust walls, paint and powder booths, and mixing rooms are designed with heavy-duty 18 Ga G90 galvanized steel panels. Customer built with simple nut and bolt assembly. Our patent pending "Z" Grid Quick Release Filter Panels make assembly, maintenance, and cleaning quick, easy, and safe. Our products are designed and fabricated to adhere to national and industry standards, including NFPA and OSHA, for optimum safety. Our products are backed by a 1-year warranty against manufacturing defects. In the event your products require service, we stock all replacement parts and even offer onsite service to get you back up and running quickly.

Fan Warranty

Our fans are fabricated in-house with a 16 ga steel body housing, non-sparking poly propylene blades, Dual Greaseable Pillow Block Bearings, 10 Ga Steel Motor Mount and Dual V Belt Drive. Our products are backed by a 1-year warranty against manufacturing defects. In the event your products require service, we stock all replacement parts and even offer onsite service to get you back up and running quickly.

Motor Warranty

All our fans come with a WEG motor. Please see the WEG warranty policy on our website and the link to the WEG warranty claims page. <https://www.weg.net/catalog/weg/US/en/return-process/servicewarranty-claim>.



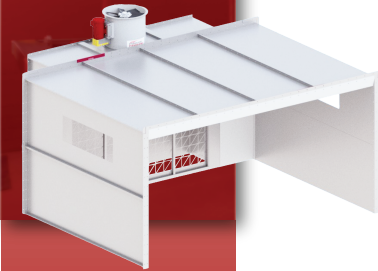
This Unit Meets or Exceeds:
NFPA 33 Standards
OSHA 1910 Standards



14' x 10' x 7' Open Face Booth: \$7,995.00 + Shipping

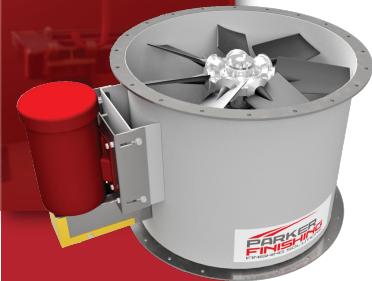
Part Number: 08358A00

BOOTH SPECIFICATIONS



Inside Width:	14' - 0'
Inside Height:	7' - 0'
Inside Depth:	10' - 0'
Overall Height:	8' 9"
Exhaust Location:	Top
Panel Material:	18 GA G90 Galvanized Steel

FAN SPECIFICATIONS



Diameter:	24"
Height:	20"
Motor Mount:	10 GA Steel
Drive:	Dual V-Belt
CFM:	7800 CFM @ 0.25" Static Pressure
Motor:	TEFC Motor - 2 HP - Mounted Outside Airstream
Voltage Options, A:	Single Phase: 115 - 208 - 230V
B:	Three Phase: 208V / 230V / 460V
Amperage:	Single Phase 18.65 - 17.3A / 3 Phase 2.78- 6.15A
Fan:	WingFan 7 Blade Fan with Aluminum Hub
Bearings:	Dual Pillow Block Bearings - Greaseable

ALSO INCLUDED

Manometer - Dwyer Mark II
Roll Weather Stripping
24" Tube Axial Fan with TEFC Motor

- 2 HP Single Phase or 2 HP 3 Phase

Galvanized Sheet Metal Panels
Flame Guard
Explosion Proof Lighting
Fasteners
Drawings/ Assembly Instructions
Filter Media
Patented "Z" Grid Quick Release Filter Panel System

Made In USA

WARRANTY

Warranty

Our finishing exhaust walls, paint and powder booths, and mixing rooms are designed with heavy-duty 18 Ga G90 galvanized steel panels. Customer built with simple nut and bolt assembly. Our patent pending "Z" Grid Quick Release Filter Panels make assembly, maintenance, and cleaning quick, easy, and safe. Our products are designed and fabricated to adhere to national and industry standards, including NFPA and OSHA, for optimum safety. Our products are backed by a 1-year warranty against manufacturing defects. In the event your products require service, we stock all replacement parts and even offer onsite service to get you back up and running quickly.

Fan Warranty

Our fans are fabricated in-house with a 16 ga steel body housing, non-sparking poly propylene blades, Dual Greaseable Pillow Block Bearings, 10 Ga Steel Motor Mount and Dual V Belt Drive. Our products are backed by a 1-year warranty against manufacturing defects. In the event your products require service, we stock all replacement parts and even offer onsite service to get you back up and running quickly.

Motor Warranty

All our fans come with a WEG motor. Please see the WEG warranty policy on our website and the link to the WEG warranty claims page. <https://www.weg.net/catalog/weg/US/en/return-process/servicewarranty-claim>.



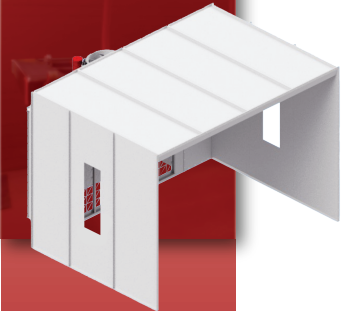
This Unit Meets or Exceeds:
NFPA 33 Standards
OSHA 1910 Standards



14' x 10' x 10' Open Face Booth: \$9,300.00 + Shipping

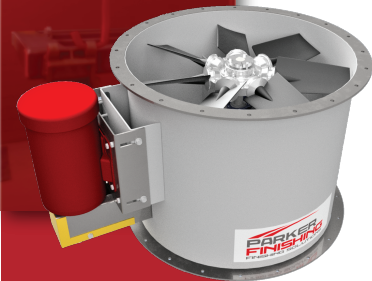
Part Number: 08484A00

BOOTH SPECIFICATIONS



Inside Width:	14' - 0'
Inside Height:	10' - 0'
Inside Depth:	10' - 0'
Overall Height:	10' 2"
Exhaust Location:	Top
Panel Material:	18 GA G90 Galvanized Steel

FAN SPECIFICATIONS



Diameter:	24"
Height:	20"
Motor Mount:	10 GA Steel
Drive:	Dual V-Belt
CFM:	7800 CFM @ 0.25" Static Pressure
Motor:	TEFC Motor - 2 HP - Mounted Outside Airstream
Voltage Options, A:	Single Phase: 115 - 208 - 230V
B:	Three Phase: 208V / 230V / 460V
Amperage:	Single Phase 18.65 - 17.3A / 3 Phase 2.78- 6.15A
Fan:	WingFan 7 Blade Fan with Aluminum Hub
Bearings:	Dual Pillow Block Bearings - Greaseable

ALSO INCLUDED

- Manometer - Dwyer Mark II
- Roll Weather Stripping
- 24" Tube Axial Fan with TEFC Motor
 - 2 HP Single Phase or 2 HP 3 Phase
- Galvanized Sheet Metal Panels
- Flame Guard
- Explosion Proof Lighting
- Fasteners
- Drawings/ Assembly Instructions
- Filter Media
- Patented "Z" Grid Quick Release Filter Panel System

Made In USA

WARRANTY

Warranty

Our finishing exhaust walls, paint and powder booths, and mixing rooms are designed with heavy-duty 18 Ga G90 galvanized steel panels. Customer built with simple nut and bolt assembly. Our patent pending "Z" Grid Quick Release Filter Panels make assembly, maintenance, and cleaning quick, easy, and safe. Our products are designed and fabricated to adhere to national and industry standards, including NFPA and OSHA, for optimum safety. Our products are backed by a 1-year warranty against manufacturing defects. In the event your products require service, we stock all replacement parts and even offer onsite service to get you back up and running quickly.

Fan Warranty

Our fans are fabricated in-house with a 16 ga steel body housing, non-sparking poly propylene blades, Dual Greaseable Pillow Block Bearings, 10 Ga Steel Motor Mount and Dual V Belt Drive. Our products are backed by a 1-year warranty against manufacturing defects. In the event your products require service, we stock all replacement parts and even offer onsite service to get you back up and running quickly.

Motor Warranty

All our fans come with a WEG motor. Please see the WEG warranty policy on our website and the link to the WEG warranty claims page. <https://www.weg.net/catalog/weg/US/en/return-process/servicewarranty-claim>.



This Unit Meets or Exceeds:
NFPA 33 Standards
OSHA 1910 Standards



10' x 10'6" x 7' Open Face Booth: \$5,500.00 + Shipping

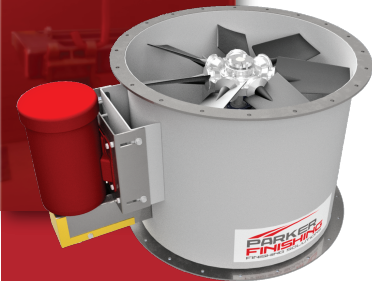
Part Number: 08483A00

BOOTH SPECIFICATIONS



Inside Width:	10' - 0'
Inside Height:	7' - 0'
Inside Depth:	10' - 6"
Overall Height:	8' 9"
Exhaust Location:	Top
Panel Material:	18 GA G90 Galvanized Steel

FAN SPECIFICATIONS



Diameter:	24"
Height:	20"
Motor Mount:	10 GA Steel
Drive:	Dual V-Belt
CFM:	7800 CFM @ 0.25" Static Pressure
Motor:	TEFC Motor - 2 HP - Mounted Outside Airstream
Voltage Options, A:	Single Phase: 115 - 208 - 230V
B:	Three Phase: 208V / 230V / 460V
Amperage:	Single Phase 18.65 - 17.3A / 3 Phase 2.78- 6.15A
Fan:	WingFan 7 Blade Fan with Aluminum Hub
Bearings:	Dual Pillow Block Bearings - Greaseable

ALSO INCLUDED

Manometer - Dwyer Mark II
Roll Weather Stripping
24" Tube Axial Fan with TEFC Motor

- 2 HP Single Phase or 2 HP 3 Phase

Galvanized Sheet Metal Panels
Flame Guard
Explosion Proof Lighting
Fasteners
Drawings/ Assembly Instructions
Filter Media
Patented "Z" Grid Quick Release Filter Panel System

Made In USA

WARRANTY

Warranty

Our finishing exhaust walls, paint and powder booths, and mixing rooms are designed with heavy-duty 18 Ga G90 galvanized steel panels. Customer built with simple nut and bolt assembly. Our patent pending "Z" Grid Quick Release Filter Panels make assembly, maintenance, and cleaning quick, easy, and safe. Our products are designed and fabricated to adhere to national and industry standards, including NFPA and OSHA, for optimum safety. Our products are backed by a 1-year warranty against manufacturing defects. In the event your products require service, we stock all replacement parts and even offer onsite service to get you back up and running quickly.

Fan Warranty

Our fans are fabricated in-house with a 16 ga steel body housing, non-sparking poly propylene blades, Dual Greaseable Pillow Block Bearings, 10 Ga Steel Motor Mount and Dual V Belt Drive. Our products are backed by a 1-year warranty against manufacturing defects. In the event your products require service, we stock all replacement parts and even offer onsite service to get you back up and running quickly.

Motor Warranty

All our fans come with a WEG motor. Please see the WEG warranty policy on our website and the link to the WEG warranty claims page. <https://www.weg.net/catalog/weg/US/en/return-process/servicewarranty-claim>.



This Unit Meets or Exceeds:
NFPA 33 Standards
OSHA 1910 Standards



7' x 3'6" x 7' Open Face Booth: \$4,299.00 + Shipping

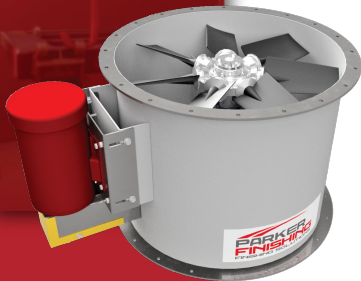
Part Number: 08452A00

BOOTH SPECIFICATIONS



Inside Width: 7' - 0'
Inside Height: 7' - 0'
Inside Depth: 3' - 6"
Overall Height: 8' 9"
Exhaust Location: Top
Panel Material: 18 GA G90 Galvanized Steel

FAN SPECIFICATIONS



Diameter: 24"
Height: 20"
Motor Mount: 10 GA Steel
Drive: Dual V-Belt
CFM: 7800 CFM @ 0.25" Static Pressure
Motor: TEFC Motor - 2 HP - Mounted Outside Airstream
Voltage Options, A: Single Phase: 115 - 208 - 230V
B: Three Phase: 208V / 230V / 460V
Amperage: Single Phase 18.65 - 17.3A / 3 Phase 2.78- 6.15A
Fan: WingFan 7 Blade Fan with Aluminum Hub
Bearings: Dual Pillow Block Bearings - Greaseable

ALSO INCLUDED

Manometer - Dwyer Mark II
Roll Weather Stripping
24" Tube Axial Fan with TEFC Motor

- 2 HP Single Phase or 2 HP 3 Phase

Galvanized Sheet Metal Panels
Flame Guard
Fasteners
Drawings/ Assembly Instructions
Filter Media
Patented "Z" Grid Quick Release Filter Panel System

Made In USA

WARRANTY

Warranty

Our finishing exhaust walls, paint and powder booths, and mixing rooms are designed with heavy-duty 18 Ga G90 galvanized steel panels. Customer built with simple nut and bolt assembly. Our patent pending "Z" Grid Quick Release Filter Panels make assembly, maintenance, and cleaning quick, easy, and safe. Our products are designed and fabricated to adhere to national and industry standards, including NFPA and OSHA, for optimum safety. Our products are backed by a 1-year warranty against manufacturing defects. In the event your products require service, we stock all replacement parts and even offer onsite service to get you back up and running quickly.

Fan Warranty

Our fans are fabricated in-house with a 16 ga steel body housing, non-sparking poly propylene blades, Dual Greaseable Pillow Block Bearings, 10 Ga Steel Motor Mount and Dual V Belt Drive. Our products are backed by a 1-year warranty against manufacturing defects. In the event your products require service, we stock all replacement parts and even offer onsite service to get you back up and running quickly.

Motor Warranty

All our fans come with a WEG motor. Please see the WEG warranty policy on our website and the link to the WEG warranty claims page. <https://www.weg.net/catalog/weg/US/en/return-process/servicewarranty-claim>.



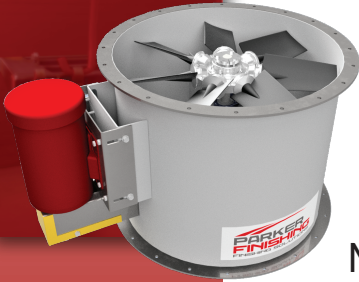
This Unit Meets or Exceeds:
NFPA 33 Standards
OSHA 1910 Standards



12" Tube Axial Fan: \$1,199.00 + Shipping

Part Number:

FAN SPECIFICATIONS



Diameter: 12"

Height: 20"

Housing: 16 GA Steel

Motor Mount: 10 GA Steel

Drive: Dual V-Belt

CFM: 1300 CFM @ 0.25" Static Pressure

Motor: TEFC Motor - 1 HP - Mounted Outsided
Air Stream

Voltage Options:

A: Single Phase: 115 - 208 - 230V

B: Three Phase: 208V / 230V / 460V

Amperage: Single Phase 8.65 - 17.3A / 3 Phase 2.78 - 5.56A

Fan: WingFan 6 Blade Fan with Aluminum Hub

Bearings: Dual Pillow Block Bearings - Greaseable

Made In USA

WARRANTY

Warranty

Our finishing exhaust walls, paint and powder booths, and mixing rooms are designed with heavy-duty 18 Ga G90 galvanized steel panels. Customer built with simple nut and bolt assembly. Our patent pending "Z" Grid Quick Release Filter Panels make assembly, maintenance, and cleaning quick, easy, and safe. Our products are designed and fabricated to adhere to national and industry standards, including NFPA and OSHA, for optimum safety. Our products are backed by a 1-year warranty against manufacturing defects. In the event your products require service, we stock all replacement parts and even offer onsite service to get you back up and running quickly.

Fan Warranty

Our fans are fabricated in-house with a 16 ga steel body housing, non-sparking poly propylene blades, Dual Greaseable Pillow Block Bearings, 10 Ga Steel Motor Mount and Dual V Belt Drive. Our products are backed by a 1-year warranty against manufacturing defects. In the event your products require service, we stock all replacement parts and even offer onsite service to get you back up and running quickly.

Motor Warranty

All our fans come with a WEG motor. Please see the WEG warranty policy on our website and the link to the WEG warranty claims page. <https://www.weg.net/catalog/weg/US/en/return-process/service-warranty-claim>.



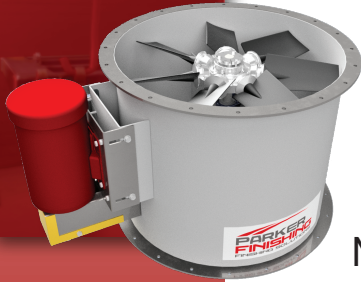
This Unit Meets or Exceeds:
NFPA 33 Standards
OSHA 1910 Standards



24" Tube Axial Fan: \$1,995.00 + Shipping

Part Number:

FAN SPECIFICATIONS



Diameter: 24"

Height: 20"

Housing: 16 GA Steel

Motor Mount: 10 GA Steel

Drive: Dual V-Belt

CFM: 7800 CFM @ 0.25" Static Pressure

Motor: TEFC Motor - 2 HP - Mounted Outsided
Air Stream

Voltage Options:

A: Single Phase: 115 - 208 - 230V

B: Three Phase: 208V / 230V / 460V

Amperage: Single Phase 18.65 - 17.3A / 3 Phase 2.78- 6.15A

Fan: WingFan 7 Blade Fan with Aluminum Hub

Bearings: Dual Pillow Block Bearings - Greaseable

Made In USA

WARRANTY

Warranty

Our finishing exhaust walls, paint and powder booths, and mixing rooms are designed with heavy-duty 18 Ga G90 galvanized steel panels. Customer built with simple nut and bolt assembly. Our patent pending "Z" Grid Quick Release Filter Panels make assembly, maintenance, and cleaning quick, easy, and safe. Our products are designed and fabricated to adhere to national and industry standards, including NFPA and OSHA, for optimum safety. Our products are backed by a 1-year warranty against manufacturing defects. In the event your products require service, we stock all replacement parts and even offer onsite service to get you back up and running quickly.

Fan Warranty

Our fans are fabricated in-house with a 16 ga steel body housing, non-sparking poly propylene blades, Dual Greaseable Pillow Block Bearings, 10 Ga Steel Motor Mount and Dual V Belt Drive. Our products are backed by a 1-year warranty against manufacturing defects. In the event your products require service, we stock all replacement parts and even offer onsite service to get you back up and running quickly.

Motor Warranty

All our fans come with a WEG motor. Please see the WEG warranty policy on our website and the link to the WEG warranty claims page. <https://www.weg.net/catalog/weg/US/en/return-process/service-warranty-claim>.



This Unit Meets or Exceeds:
NFPA 33 Standards
OSHA 1910 Standards



36" Tube Axial Fan: \$3,595.00 + Shipping

Part Number:



parkerfinishing.com

FAN SPECIFICATIONS



Diameter: 36"

Height: 20"

Housing: 16 GA Steel

Motor Mount: 10 GA Steel

Drive: Dual V-Belt

CFM: 1700 CFM @ 0.25" Static Pressure

Motor: TEFC Motor - 3 HP - Mounted Outsided
Air Stream

Voltage Options:

A: Single Phase: 115 - 208 - 230V

B: Three Phase: 208V / 230V / 460V

Amperage: Single Phase 8.65 - 17.3A / 3 Phase 2.78 - 6.15A

Fan: WingFan 6 Blade Fan with Aluminum Hub

Bearings: Dual Pillow Block Bearings - Greaseable

Made In USA

WARRANTY

Warranty

Our finishing exhaust walls, paint and powder booths, and mixing rooms are designed with heavy-duty 18 Ga G90 galvanized steel panels. Customer built with simple nut and bolt assembly. Our patent pending "Z" Grid Quick Release Filter Panels make assembly, maintenance, and cleaning quick, easy, and safe. Our products are designed and fabricated to adhere to national and industry standards, including NFPA and OSHA, for optimum safety. Our products are backed by a 1-year warranty against manufacturing defects. In the event your products require service, we stock all replacement parts and even offer onsite service to get you back up and running quickly.

Fan Warranty

Our fans are fabricated in-house with a 16 ga steel body housing, non-sparking poly propylene blades, Dual Greaseable Pillow Block Bearings, 10 Ga Steel Motor Mount and Dual V Belt Drive. Our products are backed by a 1-year warranty against manufacturing defects. In the event your products require service, we stock all replacement parts and even offer onsite service to get you back up and running quickly.

Motor Warranty

All our fans come with a WEG motor. Please see the WEG warranty policy on our website and the link to the WEG warranty claims page. <https://www.weg.net/catalog/weg/US/en/return-process/service-warranty-claim>.



This Unit Meets or Exceeds:
NFPA 33 Standards
OSHA 1910 Standards

